

WE WORK AS AN EXTENSION OF YOUR ORGANIZATION

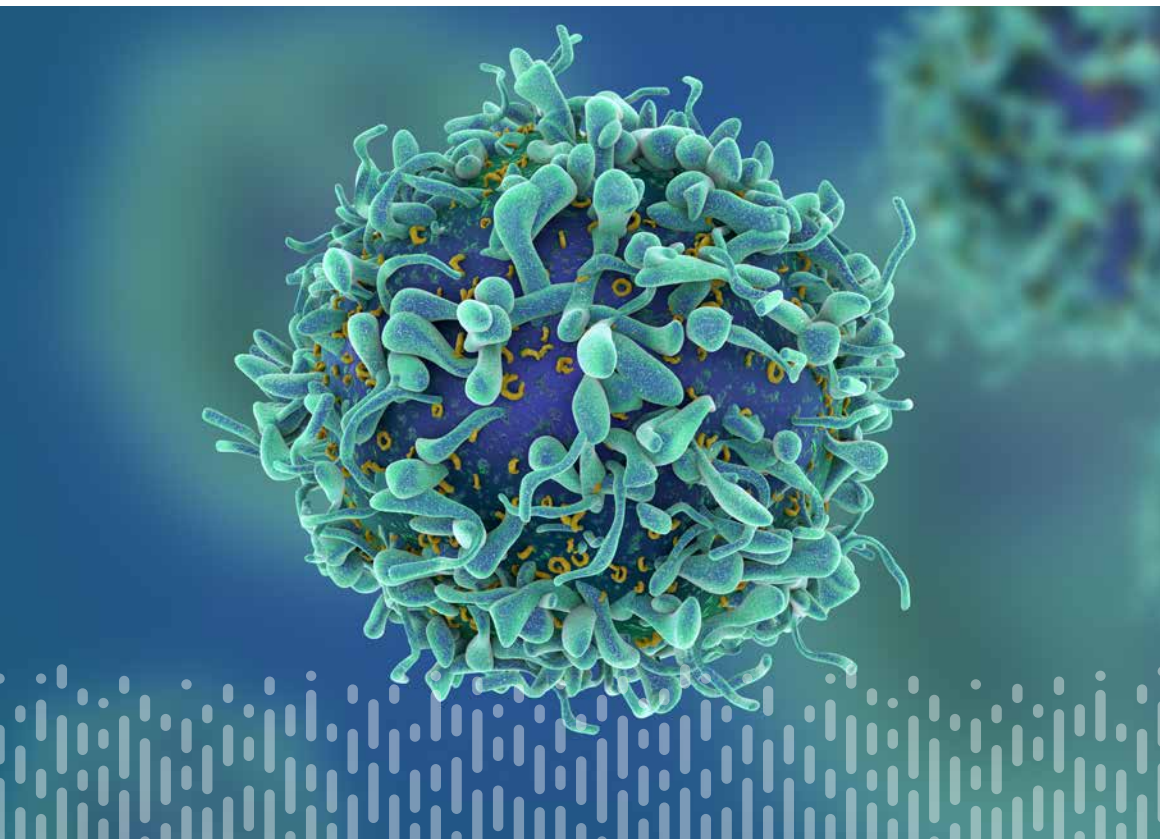
Versatile Assays and Services for Your Needs

To facilitate your clinical research program, the Immunology and Clinical Biomarkers Lab within ACM Central Laboratories can support your clinical drug development efforts. Partner with our scientists to access a broad spectrum of validated immunoassay-based testing methods to facilitate your biomarker studies.

Flexible Flow Cytometry Solutions

ACM Global Labs has a breadth of experience providing personalized flow cytometry services. Our facilities in the United States, the United Kingdom and Singapore are equipped with the Beckman Coulter Navios clinical flow cytometry system that enables the simultaneous detection of up to 10 colors in addition to forward and side scatter measurements. Our strategic geographical locations make us an ideal choice to support globally harmonized and multi-site clinical trials.

We offer standard TBNK immunophenotyping analysis and custom panel design. Our experienced scientists are ready to consult with you on your needs and to design bespoke testing strategies fully customized to your trial.



Our experts are committed to providing you with exceptional results delivered on time. You can have confidence in the level of service provided by ACM Global because fostering the success of your projects is our top priority.

To learn how we can support your clinical trials program, contact us at acmgloballab.com.

Comprehensive Biomarker Testing Capabilities

In addition to supporting flow cytometry studies, our lab provides a wide range of biomarker analysis assays and consultative services.



Detection and measurement of clinically relevant biomarkers by ELISA.

We have a range of pre-validated biomarkers ready to support your clinical trials. We routinely validate new assays in emerging areas of research and can provide support in determining the most appropriate methodology.



Multiplexed Luminex® assays for detection of several biomarkers from one sample.

We have pre-validated assays that encompass the breadth of an immune response, for example IL-6, TNFa, IFNg and IL-10 as well as the capability to create new customized panels specific to your area of interest.



Isolation and storage of peripheral blood mononuclear cells (PBMCs), granulocytes and bone marrow mononuclear cells (BMMCs).